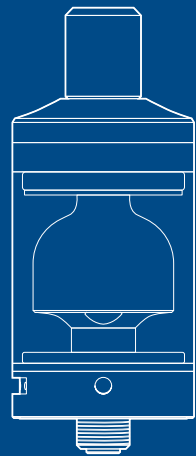


-  facebook.com/Innokin.Technology
-  instagram.com/innokintechnology
-  twitter.com/innokintech
-  reddit.com/r/innokin
-  support@innokin.com

**WARNING:** This product is only intended for use by adults of legal smoking age. This product has not been evaluated by the Food and Drug Administration and is not intended to treat, mitigate, prevent or cure any disease or condition. This product is not intended for use as a smoking cessation device. This product may be used with e-liquids that contain nicotine and should not be used by children, women who are pregnant or breastfeeding, or persons with or at risk of heart disease, high blood pressure, diabetes or taking medicine for depression or asthma, or who otherwise may be sensitive to nicotine. This product includes small parts such as the mouth piece. Always keep any small parts out of reach of children and pets to prevent swallowing or other harm.



INNOKIN  
**ARES**  
MTL RTA

**Platform**  
series

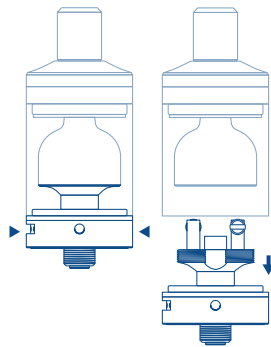
DESIGNED BY  
P. BUSARDO  
VAPINGREEK

**IMPORTANT:** DO NOT USE A COIL AT A RESISTANCE LOWER THAN YOUR DEVICE CAN HANDLE. YOU SHOULD HAVE SOME KNOWLEDGE OF BATTERY SAFETY AND OHMS LAW BEFORE ATTEMPTING TO BUILD THIS ATOMIZER. THE INCLUDED COILS ARE 1 OHM KANTHAL COILS.

NOTE: FOR ADDITIONAL AND MORE DETAILED INFORMATION, INCLUDING BUILDING YOUR OWN COILS, SCAN THE QR CODE FOR INSTRUCTIONAL VIDEOS.

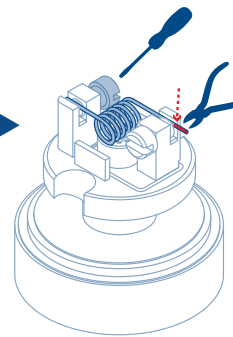
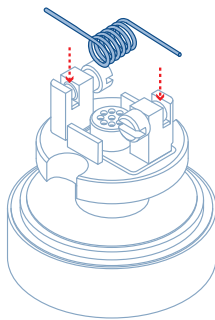
**1 ACCESS THE BUILD DECK**

- a. Unscrew the bottom cap to access the build deck.



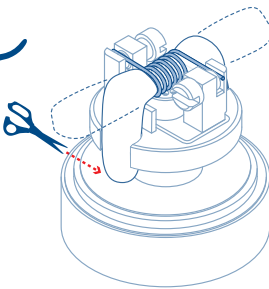
**2 MOUNT THE COIL**

- a. Mount the pre-built coil or one that you have created as shown.
- b. Tighten it using the screws and included tool.



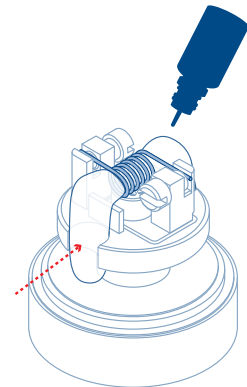
**3 WICK THE COIL**

- a. Wick the coil with cotton.
- b. Thicker VG liquids will require less cotton than thinner PG liquid.
- c. Cut the cotton so that it barely touches the bottom of the tank.



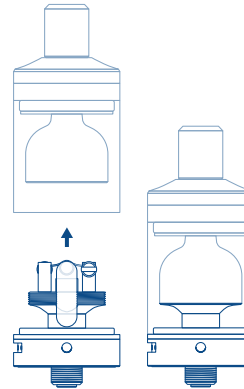
**4 PRIME THE COIL & SET THE WICK**

- a. Prime the coil lightly with e-liquid to get it started and allow easy setting of the wick into the wick channels.



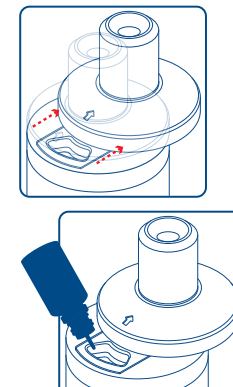
**5 REPLACE THE BUILD DECK**

- a. Screw the build deck back into the tank.



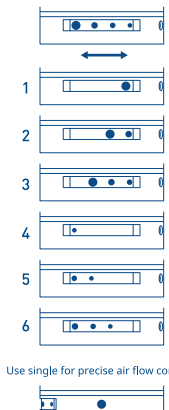
**6 FILL THE TANK**

- a. Press "PUSH TO FILL", in the direction of the arrow, to slide open cap and fill with e-liquid.



**7 ADJUST THE AIR FLOW**

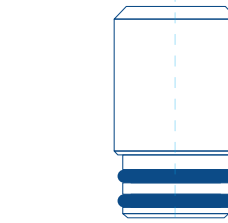
- a. Adjust the airflow to a comfortable draw and ENJOY YOUR VAPE!



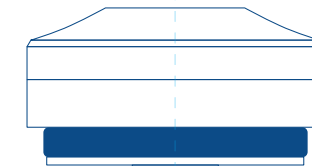
INNOKIN  
**ARES**  
MTL RTA

**Platform**  
series

DESIGNED BY  
P. BUSARDO  
VAPINGREEK



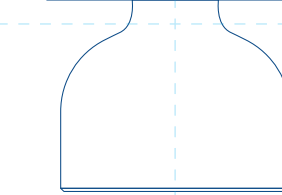
DRIP TIP



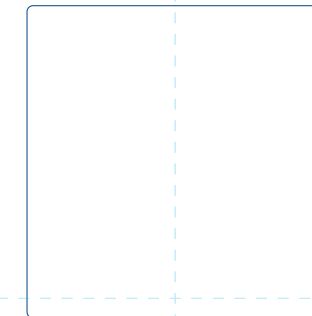
O-RING x 2

TOP CAP  
SLIDING TOP FILL CAP

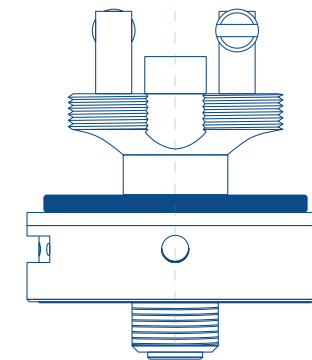
TOP CAP O-RING



BELL CHAMBER



GLASS



POST SCREWS

BASE / BUILD DECK

BASE O-RING

AIR FLOW CONTROL