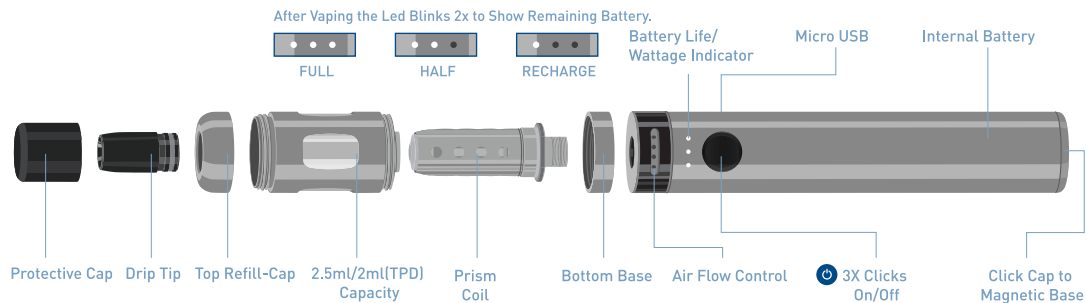


INNOKIN

ENDURA T18II

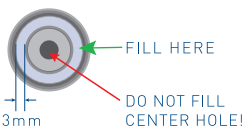
QUICK START GUIDE



REFILL THE TANK



TOP VIEW



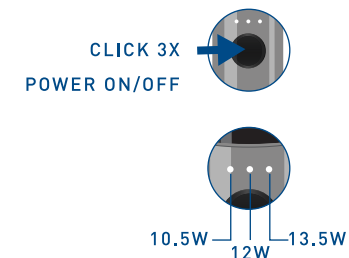
- 1 TURN TOP-FILL CAP TO OPEN.
- 2 FILL CAREFULLY. DO NOT OVER-FILL.
- 3 TURN TO CLOSE. DO NOT OVER-TIGHTEN.
- 4 **WAIT 5 MINUTES BEFORE VAPING TO PRIME NEW COIL.**
- 5 REPLACE COIL IF BURNT.

* KEEP TANK FILLED OVER 1/3 TO MAXIMIZE COIL LIFE.

ADJUST WATTAGE:

- CLICK 3X TO POWER OFF
- HOLD POWER BUTTON – LED WATTAGE INDICATOR CYCLES: [10.5W, 12W, 13.5W]
- RELEASE POWER BUTTON TO SELECT WATTAGE
- CLICK 3X TO POWER ON
- VAPE & ENJOY!

TURN TO ADJUST AIRFLOW TO IDEAL DRAW.

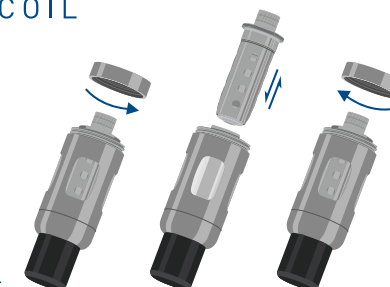


REPLACE COIL

- EMPTY TANK BEFORE REPLACING COIL.
- UNSCREW BOTTOM CAP.
- PULL OUT COIL. DISPOSE OF SAFELY.
- ADD 3 DROPS ELIQUID TO SIDES OF NEW COIL.
- ALIGN AND INSERT COIL.
- TURN TO TIGHTEN BOTTOM CAP.
- REATTACH ATOMIZER.

WAIT 5 MINUTES BEFORE VAPING A NEW COIL.

REPLACE COIL WHEN THERE IS A DECREASE IN FLAVOUR OR CLOUDS.



INSTRUCTION

- USE THE PROVIDED MICRO-USB CABLE AND CERTIFIED WALL CHARGER
- RECHARGE WHEN LED IS
- DO NOT LET THE BATTERY RUN EMPTY.
- DO NOT LEAVE UNATTENDED WHILE CHARGING.
- POWER OFF ENDURA T18II BEFORE PLACING IN POCKET, PURSE OR BAG.
- CLICK MAGNETIC CAP TO BASE WHILE VAPING!

SUPPORT

- facebook.com/Innokin.Technology
- instagram.com/innokintechnology
- twitter.com/innokintech
- reddit.com/r/innokin
- support@innokin.com