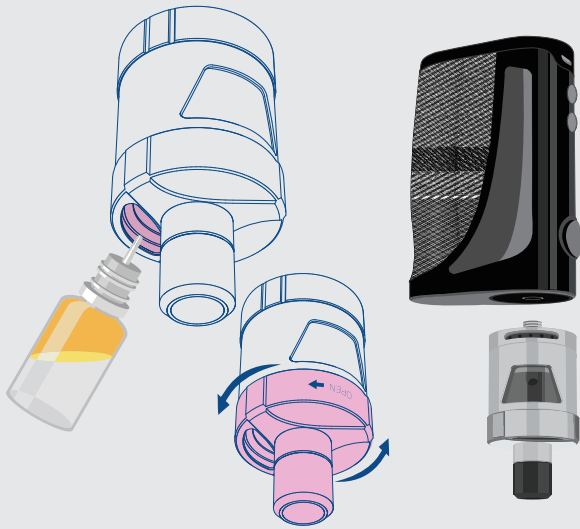


FLIP OPEN TO CONTINUE

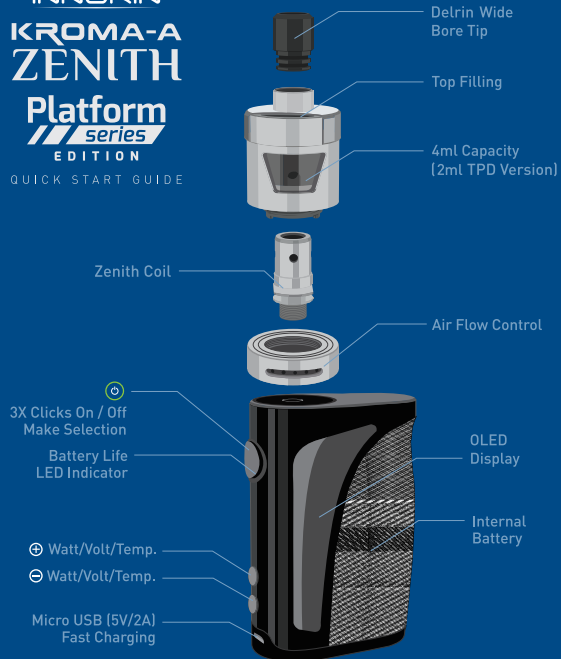


2 UNSCREW CAP AND TOP FILL
PLEASE WAIT 5 MINUTES FOR COIL TO SATURATE.

1 ATTACH TANK

INNOKIN
**KROMA-A
ZENITH**
Platform
series
EDITION

QUICK START GUIDE



FLIP FOR MORE INFO

3 3X CLICKS TO TURN ON

4 SELECT COIL



WATTAGE COIL
TEMP. COIL

COIL TYPE 0.21Ω
SAME Ni Ti SS W

W SS
Ni Ti SS

WATTAGE

RESISTANCE BATT. LIFE
0.65Ω 15.0W
0.00V 0.00S

VOLTAGE PUFF TIME
WATTAGE

TEMP. CONTROL

RESISTANCE, WIRE TYPE
0.10Ni 180°C
70.0W 0.00S

WATTAGE TEMP. (C OR F)

5 ADJUST SETTINGS AS DESIRED



6 ENJOY THE VAPOR

For full content, please refer to user manual on the product page at INNOKIN.COM

QUICK REFERENCE GUIDE

BATTERY LIFE INDICATOR



SETTINGS AND MODES

HOLD +

ADJUST V/W/TEMP. UP

HOLD -

ADJUST V/W/TEMP. DOWN

PRESS +/-

FOR PRECISE READING:
RESISTANCE/VOLTS/PUFF #

HOLD +/-

FLIP DISPLAY ORIENTATION

HOLD [Power] +

MODE SELECT (Ni/Ti/SS/W)

HOLD [Power] -

ADJUST RAMP UP WATTAGE IN TC MODE

SUPPORT

facebook.com/Innokin.Technology

instagram.com/innokintechnology

twitter.com/innokintech

reddit.com/r/innokin

support@innokin.com