

# PRISM T18E TANK



USER MANUAL

This Prism T18E Tank is intended for adult smokers. The product is not recommended for non-smokers, young people under the age of 18 years, pregnant or breast feeding women and those experiencing general ill health.

**For the best possible vaping experience, please read all of this information leaflet (user manual) carefully before you start using this product because it contains important information for you.**

Verify your Prism T18E tank is an authentic Innokin Technology product:

- 1) Locate the label on the packaging and scratch the silver to reveal your Prism T18E tank Unique Authorization number.
- 2) Visit: <http://www.innokin.com/verify-device/>
- 3) Enter the Unique Authentication number in the Authentication field.
- 4) Verify your Prism T18E tank is a genuine Innokin product. If you have any questions or suggestions, please write to us at [support@innokin.com](mailto:support@innokin.com).

## INSTRUCTIONS FOR USE

The Prism T18E tank can be used with e-liquids that contain nicotine or are nicotine-free. If you are using e-liquid containing nicotine please refer to the information provided in section "IMPORTANT INFORMATION ABOUT USING NICOTINE-CONTAINING E-LIQUIDS."

### How to refill the Prism T18E Tank:

1. Hold the top cap and unscrew it from the tank.
2. Add e-liquid against the inside wall of the tank.
3. Screw the top cap back onto the tank.

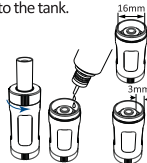
### IMPORTANT:

Add e-liquid using a refill container with a nozzle's width less than 2.5 millimetres.

Do not add e-liquid to the central airflow hole.

Do not over-tighten.

After refill Please wait 5 minutes before vaping.



### E-liquid CAUTION:

Take care when filling the tank and do not overfill. In case of e-liquid contact with skin, wash immediately and thoroughly with soap and water.

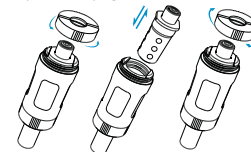
In case of e-liquid contact with eyes, rinse immediately and thoroughly with water and seek full medical advice immediately. In case of an accident, or if you feel unwell, seek full medical advice.

### WHEN IS IT TIME TO CHANGE THE COIL?

All coils will need to be replaced after being used for a certain amount of time. The time between coil replacements will vary according to the e-liquid used and personal vaping habits. The first sign that your coil needs to be replaced is that there will be less vapor production. The second indication that the atomizer coil needs to be replaced is that flavors will become less tasty, and may begin to have a burnt taste. This burnt taste will become more and more apparent as the coil continues to wear out. We recommend that you change the coil at the very first sign of burnt taste and decreased clouds.

### How to replacing a coil:

- 1) Hold the tank with the threading up.
  - 2) Unscrew the bottom metal cap of tank
  - 3) Hold the coil and gently pull to remove.
  - 4) Carefully and safely dispose of the used coil. Keep away from children and pets.
- CAUTION:** Make sure there is no e-liquid in the Atomizer /Tank before you pull out the coil.
- 5) Properly align the flat sides of the new coil.
  - 6) Push to fully insert the new coil firmly into tank.
  - 7) Ensure that the coil is completely inserted.
  - 8) Carefully and firmly tighten the bottom metal cap.



## IMPORTANT INFORMATION ABOUT USING NICOTINE-CONTAINING E-LIQUIDS.

Before using nicotine-containing e-liquids the user should read the following information carefully.

### Do not use nicotine containing e-liquids:

- If you are allergic to nicotine or any of the other ingredient contained in the e-liquid (see manufacturer's label for full details).

### Warnings and precautions

Nicotine-containing e-liquids are not recommended for:

- Non-smokers;
- Young people under the age of 18 years;
- Pregnant or breast feeding women; as nicotine is known to cross the placenta and to be excreted in breast milk;

- Those experiencing general ill health; such as heart disease, stomach and duodenal ulcers, liver or kidney problems, long term throat disease or difficulty breathing due to bronchitis, emphysema or asthma;
- Those who have an overactive thyroid gland or have a phaeochromocytoma (a tumour of the adrenal gland that can affect high blood pressure);
- Those who have diabetes, as nicotine may affect your blood sugar levels.
- Those taking the following medication;
  - Theophylline (to treat breathing problems)
  - Ropinirole (to treat restless legs)
  - Clozapone (to treat schizophrenia)

### Possible side effects

If you inhale too much nicotine or use the product too much you may experience one or more of the following effects:

- Feeling faint;

- Nausea (feeling sick);
- Headache;
- Coughing;
- Irritation in the mouth or throat;
- Dizziness;
- Stomach discomfort
- Hiccups;
- Nasal congestion;
- Vomiting (being sick);
- Chest palpitations;
- Abnormal heart rate.

If you experience any of the above side effects including any possible side effects not listed in this leaflet (user manual), discontinue using the product. If the effect(s) continue after you stop use, consult your doctor or health-care professional and bring this leaflet to their attention.

### Addictiveness

Nicotine is highly addictive; and is therefore intended for adult smokers only.

### How to store the Prism T18E Tank:

Store the Prism T18E tank in room temperature (5°C to 30°C) in a clean dry place.

Keep the product out of the sight and reach of children and animals.

### How to dispose of the Prism T18E Tank:

The Prism T18E tank is mainly made of stainless steel and Pyrex glass. Please dispose of used coils and tank in a safe and environmentally responsible way. The tank contains small parts and may contain nicotine. Keep away from children and pets. If e-liquid comes in contact with eyes or skin, wash immediately.

### Manufacturer

Shenzhen Innokin Technology Co., Ltd  
Building 6, Xinxintian Industrial Park, Xinsha Road, Shajing, Baoan District, 518104, Shenzhen, China  
Telephone: +86-755-2989-8770  
Email: [info@innokin.com](mailto:info@innokin.com)

### Contact

Innokin Technology GmbH  
Fritz-Neuert-Strasse17, 75181 Pforzheim, Germany  
Email: [info.de@innokin.com](mailto:info.de@innokin.com)

